



22m Truck Mount

MACHINE SPECIFICATION SHEET

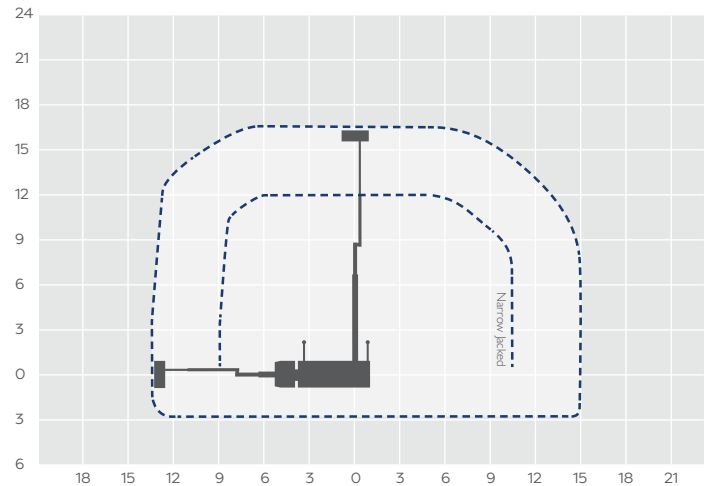
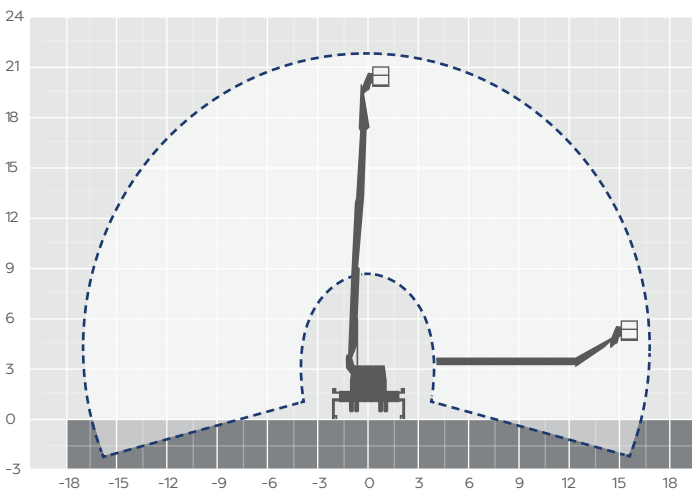
TM22

REACH HEIGHT	22.00m
PLATFORM HEIGHT	20.00m
CLOSED LENGTH	8.82m
CLOSED HEIGHT	3.52m
CLOSED WIDTH	2.40m
HORIZONTAL REACH	17.20m
WIDTH MAX WORKING	5.00m
WIDTH MIN WORKING*	2.40m variable
SAFE WORKING LOAD	280kg
WEIGHT	8,000kg
CAGE DIMENSIONS	1.80x0.80x1.10m
CAGE ROTATION	155°
IPAF CATEGORY	1b
SLEW	365°
FEATURED MODEL	GSR 228J

WILSON ACCESS HIRE

The GSR 228J has a reach height of 22.00m, a horizontal reach of 17.20m and a Safe Working Load of 280kg allowing for 2 persons in the basket. The GSR 228J truck mount is an ideal access platform for facilities management, pest control and film and media.

The information provided is for guidance only. It may change at any time in accordance with manufacturer's specification. Variable jacking will affect the working envelope. Outreach is variable depending on load, angle of rotation and outrigger configuration.



Side profile

